



BlueShore Financial Centre for the Performing Arts at Capilano University

Visual Story



This package aims to support people with communication difficulties, learning disabilities, neurodiverse individuals and more. It can be used to help anyone.

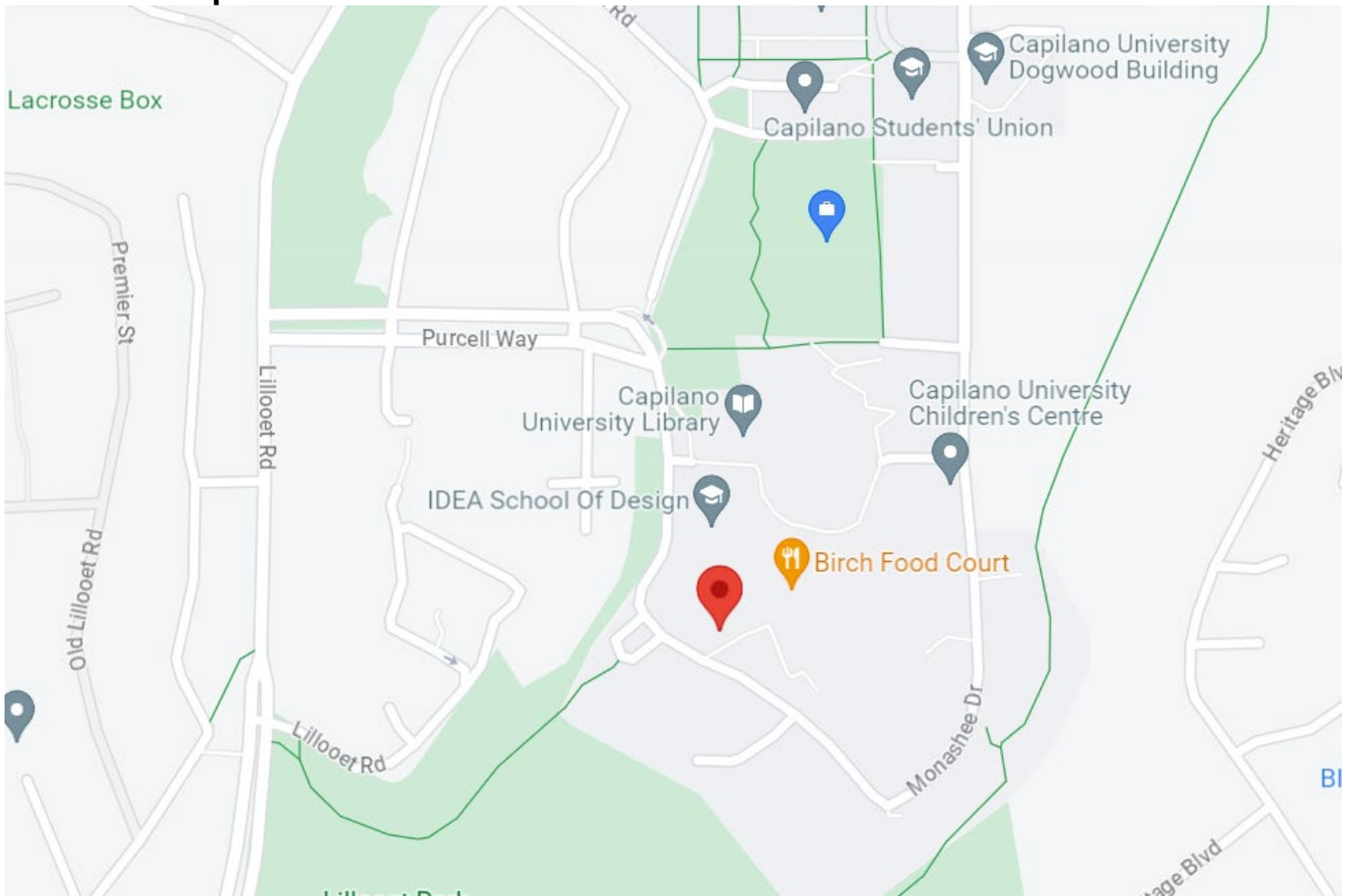
Need more information, or would like to schedule a visit to get comfortable in the space?

Contact Ginger King | Audience Services Assistant

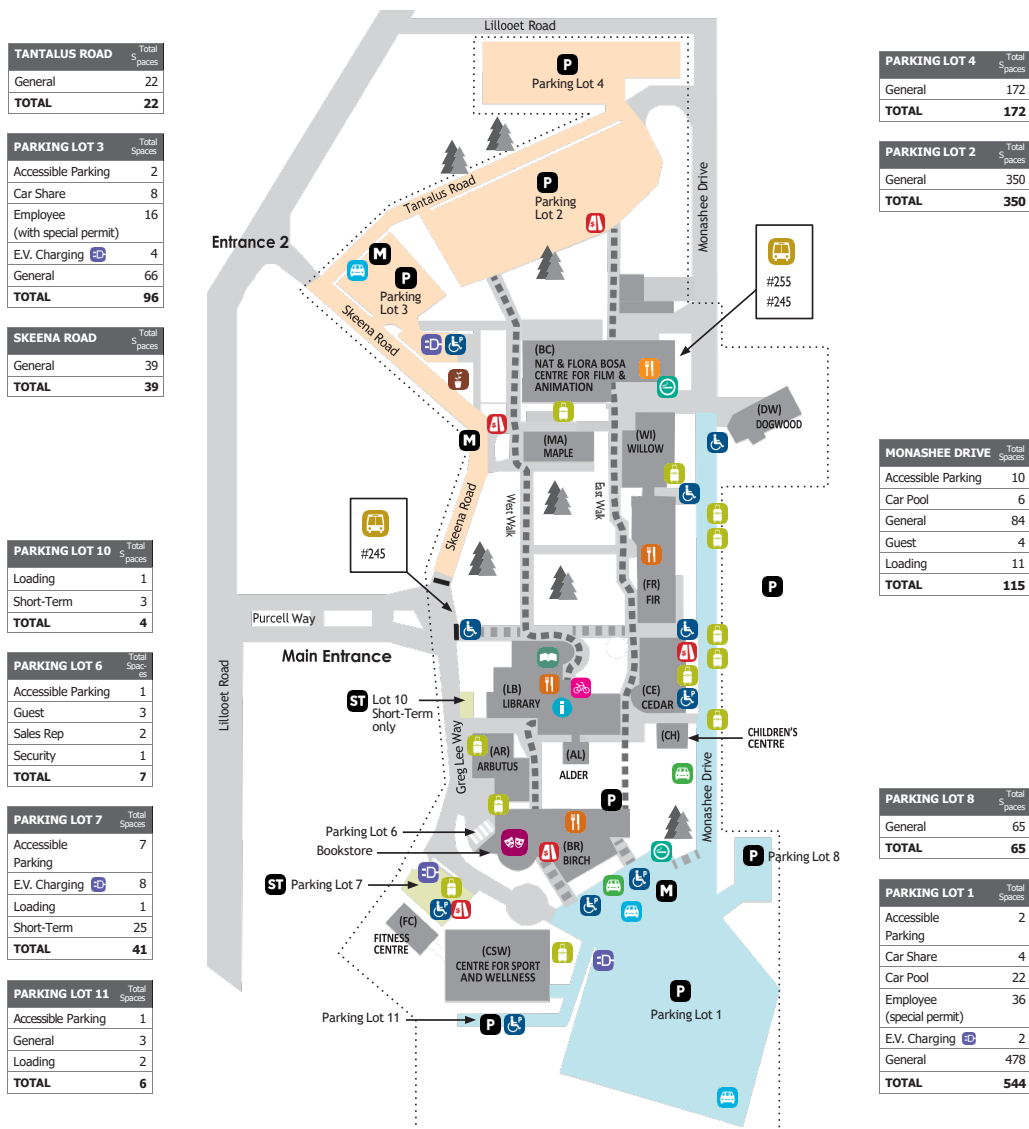
Email: gingerking@capilanou.ca
Phone: 604.986.1911 ext. 3650

How to get here:

The BlueShore Financial Centre for the Performing Arts is in the Birch Building on the Capilano University campus in North Vancouver. It is across from the Centre for Sport and Wellness



The above picture shows the location (with a red mark) on a map of the surrounding area.



- SHORT-TERM**
Short-term lots 7 & 10
Lot 137
- ZONE 1**
(excluding short-term lots 7 & 10)
Lot 137
- ZONE 2**
(excluding short-term lots 7 & 10)
Lot 137

INDIGO neo Download the Indigo NEO app to your mobile phone
indigoneo.ca

- Information/Reception**
Food Services
Library
Theatre
Designated Smoking Area
- Accessible Routes**
Community Garden
Loading Zones
Transit
Bike Storage Area

PARKING LEGEND	
	Pay station accepts cash & credit cards
	Parking Lots
	FREE Motorcycle parking
	Short-Term
	Car Pool
	Car Share
	Loading
	Parking for persons with a disability
	Electric Vehicle Charging Station

TOTAL PARKING SPACES	General	Parking for persons with a disability	Guest	Employee (with special permit)	Loading	Car Pool (registered)	Sales Rep	Security	Short-Term Pay Parking	Electric Vehicle Charging Station	Evo car share dedicated parking
1,453	1,279	23	7	53	15	28	2	1	28	12	12

Last updated: November 29, 2022

The above picture shows a map of the campus

Directions by Car:

Northbound on Hwy 1 (Trans-Canada Highway):

Take Exit 22b at the north end of the Iron Workers Memorial (Second Narrows) Bridge. From Exit 22b, proceed through the first intersection in the centre lanes and continue up the hill on Lillooet Road to main entrance on Purcell Way (.5km). Turn right on Purcell Way.

Southbound on Hwy 1 (Trans-Canada Highway):

Take Exit 22b toward Lynn Creek, use the left two lanes to turn left onto Fern St. (signs for Mount Seymour Parkway/Lillooet Rd.), then proceed straight on to Lillooet Rd. to the main entrance on Purcell Way (.5km). Turn right on Purcell Way.

Parking Information:

There is a parking meter located inside the Birch building (the building that houses the theatre). The only exception to this is if I am parking in the Short-Term Lot (#7) where there is an outside meter specific to that location. Please note there is no flat rate in the short-term lot unless I am parking in the accessible parking spots with a designated SPARC permit.

Before proceeding to the theatre, I will need to note my license plate number. The flat rate for the evening (after 5 p.m.) and weekends/stats is \$5.00

To save time and for convenience, the University highly recommends pre-paying for parking using the Pay by Phone option. The lot number for Parking Lot #1, the main theatre parking lot, is 5783.

By Translink:

From Phibbs Exchange: Take the 245 bus to stop number 51754 (Purcell and Skeena). I will need to walk south down on Greg Lee Way toward the Birch Building to locate the theatre.

From Lonsdale and 3rd St: Take the 255 bus to stop number 51754 (Purcell and Skeena). I will need to walk south down on Greg Lee Way toward the Birch Building to locate the theatre.

Translink Accessible Trip Planner: <https://www.translink.ca/rider-guide/transit-accessibility>

Moov It Website with transit information on how to get here:

https://moovitapp.com/tripplan/southwest_british_columbia-145/poi/BlueShore%20Financial%20Centre%20for%20the%20Performing%20Arts/t/en?customerId=4908&tll=49.315987_-123.020093&t=1

Theatre Lobby Main Entrance

BlueShore Centre for The Performing Arts (also known as BlueShore at CapU) is a building that has theatre, music and dance performances, as well as other events.

The theatre seats 372 people with graded seating with stairs. The front row (A) has no stairs.



The above picture shows the main entrance to the building across from the accessibility parking lot

There is an automatic button to open the doors from the outside.



The above picture shows the terrain of the sidewalk leading to the theatre building.

The Lobby



The above picture shows the Theatre Lobby in the Birch Building.

This is where I will enter from outside. In the lobby I can pick up tickets, use the washroom, purchase drinks or snacks and access the theatre.

Before the show starts people may be waiting outside in a line to keep the lobby clear. There may be some people who have asked to sit in the lobby instead of waiting outside. These people may be talking loudly. I am safe in the lobby.

If I need to leave during a show for whatever reason I am welcome to sit in the lobby. I can ask the Front of House Manager for help if I need it. I may still hear some of the sounds from the show while I am in the lobby, but it should be quieter than inside the theatre space.

The Box Office 📺



The above picture shows the BlueShore at CapU Box Office.

If I am visiting The BlueShore at CapU, I will need a ticket for my event. I might have purchased tickets in advance or be buying them when I arrive. I can pick up purchased tickets or buy a ticket at the Box Office from the Box Office Associate.

When I enter the theatre, I will show my Print at Home ticket or the ticket from the box office. My ticket may also be on my mobile device. An usher will scan my ticket QR or Barcode to count my attendance at the show.

The Concession 🏠

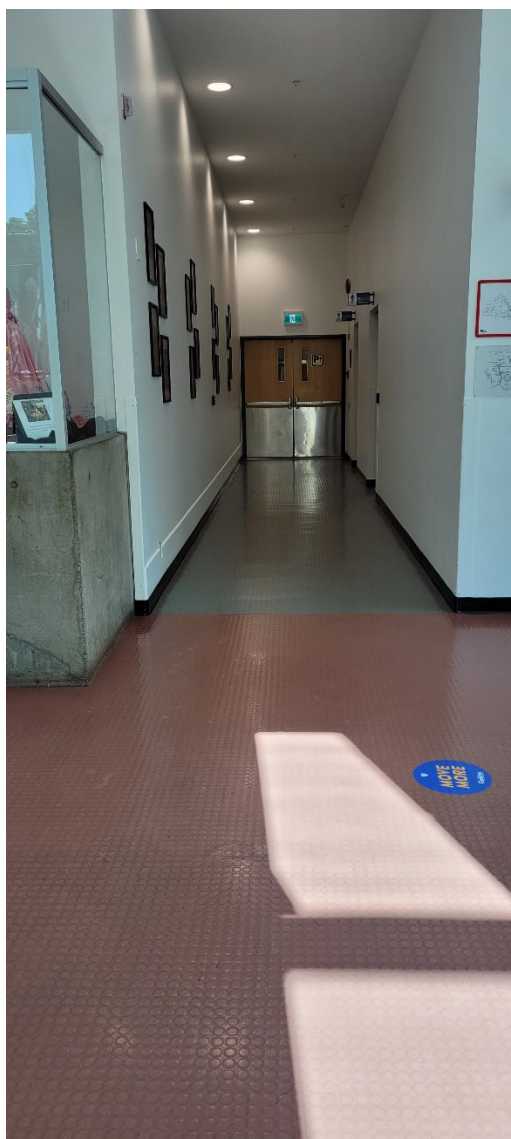


The above picture is of the concession

I may wish to purchase a drink or snack to enjoy in the theatre. The concession sells coffee, cold drinks, wine and beer. They also have snacks like chips and cookies.

The Washrooms

When facing the theatre if I turn to the right, there is a hallway to the washrooms.



The above picture is the hallway to the washrooms.

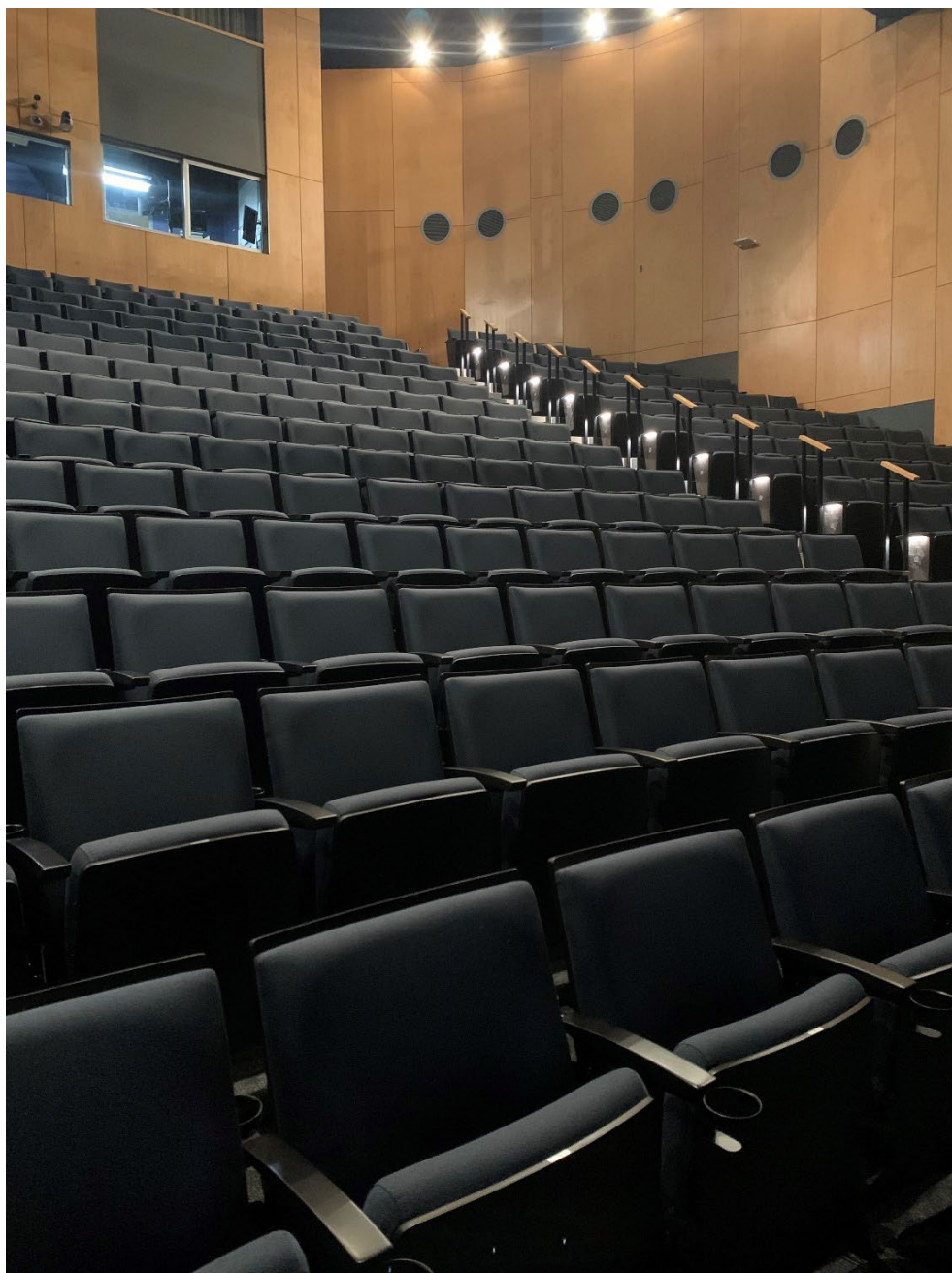
There is one gender neutral/accessible washroom and one men's and one women's with stalls inside

There are accessible stalls in each washroom. There is an accessible push button on the bathroom door on the right side of the washroom hallway.



The above picture is the washroom doors

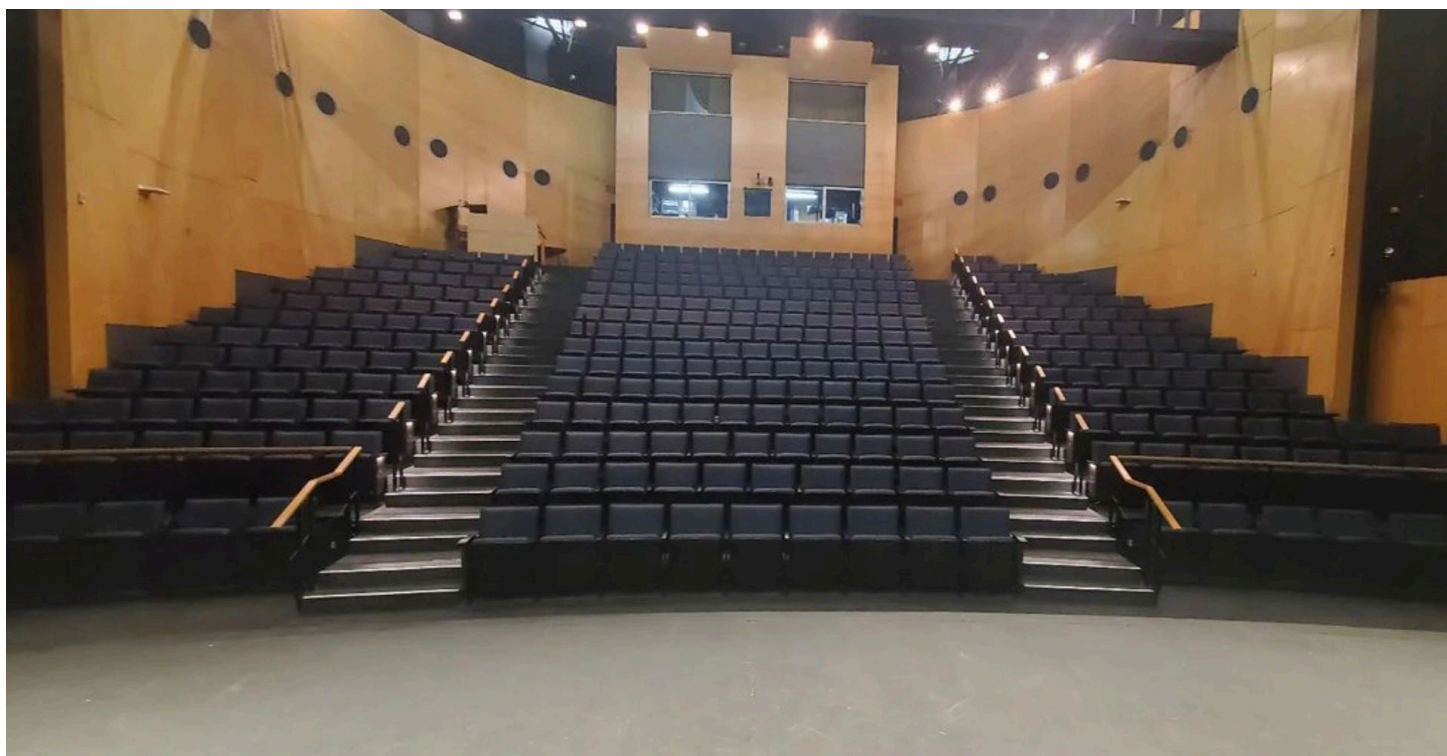
The Theatre



This above is a picture of the theatre, taken from the entrance on the floor, showing empty seats. The seats have cup-holders on each arm. All seats have a row and seat number that will match my ticket information. If I need or want to change seats, I will speak with an usher.



The above is a picture of an empty theatre, taken from the back of the theatre showing performers on the stage.



The above is a picture of an empty theatre, taken from the stage. This is the performers' point of view. I can see the front row has no stairs and level access. The lighting and sound booths are at the back of the theatre. I may see theatre technicians working on them during the show.

The Theatre (continued)

The theatre doors will be opened half an hour before the show is set to start for the audience to enter. Sometimes the stage or seating looks a little bit different depending on the show. If I need to leave the space at any time I can exit through the door to the lobby.



The above picture is of the seats and stairs from the theatre entrance. The stairs are short and relatively easy to climb. There are handrails on one side.

People I might see

Front of House Manager: This person will be moving around the space to answer questions plus will make sure I get into the performance and see the show. They will have an ID tag and are there to assist me.



Above is a picture of a Front of House Manager at the theatre entrance.

Box Office Associate: This is the person that will be sitting in the box office and will welcome I when I enter the lobby. They will help I pick up my tickets to the show or help I buy tickets if I have not purchased tickets before coming to the theatre.

Volunteer or Student Usher: This person will take my ticket from me before I enter the theatre and will return it to me, they are a good person to ask if I have questions.



Above is a picture of two ushers. They are using ticket scanners to scan tickets for entry into the theatre. 📱

House Technicians: This person will run the lights and sound for the show, and they sit in the “booth” which is a small room up high in the back of the theatre. I may also see a technician using the sound board in the back right side of the theatre. This person controls the sound levels for the show

About Service Animals

Service Dogs are welcome at all presentations. Service dogs perform specific services for individuals with disabilities that they cannot perform themselves including guiding the blind, alerting the deaf and helping individuals in wheelchairs pick up items or get in and out of the wheelchair. I will let the theatre know if I am bringing my service dog.



The BlueShore at CapU will try to accommodate patrons with Emotional Support Animals (not certified), however BlueShore staff and its clients have the right to refuse entry to uncertified support animals if there are any safety or health concerns. The patron may also be removed from the auditorium if the animal causes disruption to the event, or damage to the property. I will contact the venue ahead of time to verify that the theatre can accommodate my support animal request.

About Hearing Assist

This Venue Provides Audio Accessibility

Generously provided by the
Slaight Family Foundation

- ✓ Scan the QR code and download the Bettear App
- ✓ Make sure that your hearing aids cochlear or headphones are connected to bluetooth
- ✓ Press the "Tap to Search" in the venue
- ✓ Press "Join"
- ✓ Mute the microphone on your hearing aid/cochlear device
- ✓ Listen and Enjoy!



wavefrontcentre.ca/bettear



When the show is over

At the end, people may clap to show they liked the show. Then we will leave the theatre. I can go home or talk to my family or friends about what I saw.

Questions?

If I have any questions about anything I have read or seen in this Visual Story, I will contact the box office for more clarification. 604-990-7810 or email at boxoffice@capilanou.ca