

International Student Guide

2026
2027



A space to be you

Located in North Vancouver and Squamish, B.C., Capilano University offers a welcoming and inclusive environment surrounded by the majestic mountains and rugged shoreline of Canada’s West Coast.

Students from around the globe thrive here, enjoying a vibrant campus life, access to unparalleled nature, and a diverse, respectful community that values every background and voice.

With small classes, supportive faculty and a strong focus on enabling student success, CapU delivers a world-class education that blends academic excellence with practical skills and real-world experience.

Capilano University is named after Chief Joe Capilano (1854–1910), an important leader of the Skwxwú7mesh (Squamish) Nation of the Coast Salish Peoples. We respectfully acknowledge that our campuses are located on the unceded territories of the səliłwətaʔ (Tsleil-Waututh), shíshálh (Sechelt), Skwxwú7mesh (Squamish), and xʷməθkʷəy̓əm (Musqueam) Nations.

Study in North Vancouver or Squamish, B.C.

CapU’s main campus in North Vancouver offers the best of both worlds—nestled among lush forests and towering mountains, yet just a short distance from downtown Vancouver, it’s the perfect setting for outdoor adventurers and city explorers alike. The Vancouver area is a safe, beautiful and ethnically diverse region known for its active outdoor lifestyle, innovative food scene and unique cultural experiences.

Our Squamish campus is located in the beautiful Sea-to-Sky Corridor just 45 minutes to Whistler and 60 minutes to Vancouver, B.C.

From CapU main campus

30 min.	to downtown Vancouver
10 min.	to the beach
20 min.	to local mountains

Mild climate

22° C	average July high
7° C	average January high

Source: Meteorological Service of Canada



Diverse and globally engaged

CapU is a public post-secondary institution with the Education Quality Assurance designation. Institutions with this designation meet or exceed quality assurance standards set by the province of B.C.

93 countries represented	59 student clubs, associations and collectives	4,309 International students	9,690 students enrolled in for-credit programs
292 Indigenous students	25+ study-abroad destinations to choose from	22 average number of students in a class	



Image: Vancouver skyline. Cover: Maximilliano (Max) A., Bachelor of Business Administration student, Hong Kong, Spring 2024 Full Term Exchange participant in Lucerne, Switzerland.

Find what inspires you

Arts & sciences

CapU's Arts & Sciences programs in areas such as creative writing, psychology, engineering and biology blend interdisciplinary learning, critical thinking and hands-on research, preparing you for diverse career paths and further studies.



Professional studies & tourism

Launch your career with Capilano University's business, communications, legal studies and tourism programs, where work-integrated learning, strong industry connections and a focus on sustainability and innovation set you up for success in a fast-evolving global market.



Health

Turn your passion for helping others into a fulfilling career with our health care assistant, rehabilitation assistant, music therapy and kinesiology programs, where hands-on training and expert mentorship prepare you to make a real difference in people's lives.



"Small class sizes and hands-on kinesiology labs have made learning personal, and I'm excited for my practicum next year. The Career Development Centre workshops were also a big help in securing this work opportunity."

Manroop K.

Bachelor of Kinesiology, India



The new Fulmer Family Centre for Childhood Studies

Education

Launch a rewarding career working with children with the top early childhood care and education program in Western Canada. CapU offers immersive learning experiences at our on-campus childcare facilities and new Centre for Childhood Studies focused on early years research, education and innovation.



Hear from Sharada about her experience as a second-year student in the ECCE program and her journey coming to Canada from Kathmandu, Nepal.



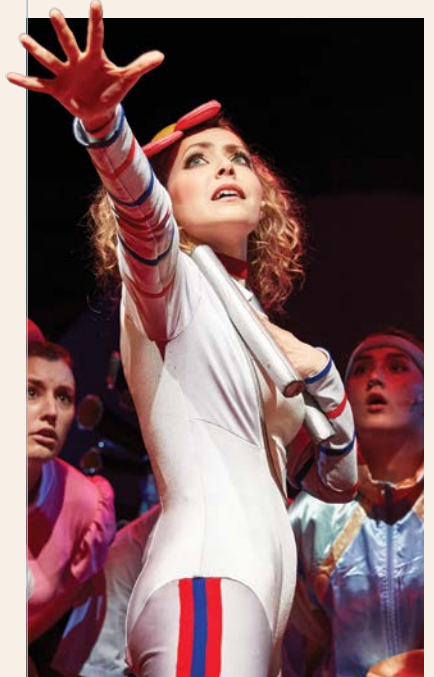
Film, animation & design

Bring your creative vision to life with our industry-leading film, animation and design programs, where real-world experience, cutting-edge technology and our state-of-the-art film centre and design studios prepare you for success in the creative media sector.



Performing arts

CapU's performing arts programs stand out with expert faculty, unparalleled performance opportunities, and a strong focus on artistic innovation, all set in a vibrant creative community that prepares you to shine on stage and beyond.



Hear about Ted's journey coming to Canada from Kenya to study acting and his experience as a first-year student at CapU.





Pick the right program for you

You can also study at CapU for just one or two semesters through our Visiting International Student Program (VISP)! It's a flexible way to take transferable courses while experiencing the best of CapU and life in Canada. capilanou.ca/visp

Areas of study		Program starts in	International fees (CAD \$)				
			Year 1	Year 2	Year 3	Year 4	Total
English for Academic Purposes (EAP) Programs							
EAP 100 and EAP 101		Sept, Jan, May	6,887 (1 term)				6,887
EAP 100 and EAP 101 plus one academic course from Arts, Sciences, Business		Sept, Jan, May	9,695 (1 term)				9,695
EAP 100 and EAP 101 plus two academic courses from Arts, Sciences or Business		Sept, Jan, May	12,024 (1 term)				12,024
EAP 090		Sept, Jan, May	7,921 (1 term)				7,921
EAP 090 plus one academic course from Arts, Sciences or Business		Sept, Jan, May	10,217 (1 term)				10,217
EAP 050, EAP 060, EAP 070 or EAP 080		Sept, Jan, May	9,630 (1 term)				9,630
Arts (Humanities & Social Sciences)							
Bachelor of Arts Degree–Applied Behaviour Analysis (Autism)	FS W	Sept	23,995	23,995	27,800	28,103	103,893
Bachelor of Arts Degree with a Major in Interdisciplinary Studies	⌘ FS	Sept, Jan, May	23,995	23,995	23,995	23,821	95,806
Bachelor of Arts Degree with a Major in Psychology	FS	Sept, Jan, May	23,648	23,648	25,379	30,071	102,746
Bachelor of Arts Degree with a Major in Writing and Literature (Concentrations: Literature and Culture and Critical and Creative Writing)	FS	Sept, Jan, May	23,648	23,648	25,379	25,379	98,054
Bachelor of Environment and Society (Environmental Studies)	FS D	Sept, Jan, May	23,648	23,648	25,379	25,562	98,237
Environment and Society (Environmental Studies) Diploma		Sept, Jan, May	23,648	23,648	–	–	47,296
Associate of Arts Degree	FS	Sept, Jan, May	23,648	23,648	–	–	47,296
Associate of Arts Degree–Creative Writing, English or Psychology	FS	Sept, Jan, May	23,648	23,648	–	–	47,296
Science, Technology, Engineering & Mathematics (STEM)							
Bachelor of Science–General (Concentrations: Biomedical Science, Computational Science, Environmental Science)	FS	Sept, Jan, May	23,648	23,648	25,379	25,379	98,054
Bachelor of Environment and Society (Environmental Sciences)	FS D	Sept, Jan, May	23,975	24,072	25,379	25,562	98,988
Environment and Society (Environmental Sciences) Diploma	FS	Sept, Jan, May	23,975	24,072	–	–	48,047
Associate of Science Degree	FS	Sept, Jan, May	25,097	25,097	–	–	50,194
Associate of Science Degree–Biology	FS	Sept, Jan, May	25,097	25,097	–	–	50,194
Engineering Transition Diploma	FS	Sept	26,545	25,821	–	–	52,366
Engineering Certificate		Sept	33,063		–	–	33,063
Business							
Bachelor of Business Administration Degree (Concentrations: Accounting, Business Information Management and Analytics, Financial Planning, Human Resource Management, International Business and Logistics, Marketing)	⌘ FS W D	Sept, Jan, May	23,648	23,648	25,379	25,379	98,054
Business Administration Diploma	FS	Sept, Jan, May	23,648	23,648	–	–	47,296
Business Administration Certificate		Sept, Jan, May	14,773	–	–	–	14,773
Business Administration Pathway		Sept	25,821	–	–	–	25,821
Communication							
Bachelor of Communication Studies Degree	⌘ FS W D	Sept, Jan	23,648	23,648	25,335	25,162	97,793
Legal Studies							
Bachelor of Legal Studies (Paralegal) Degree	⌘ FS W ❶	Sept	24,514	24,687	26,552	26,552	102,305
Paralegal Diploma	FS W ❶	Sept	27,725	30,071	–	–	57,796
Legal Administrative Assistant Certificate	W	Sept, Jan	25,821	–	–	–	25,821

Areas of study		Program starts in	International fees (CAD \$)				
			Year 1	Year 2	Year 3	Year 4	Total
Education & Childhood Studies							
Bachelor of Early Childhood Care and Education Degree	⌘ FS W D	Sept	25,459	22,909	25,270	25,919	99,557
Early Childhood Care and Education Diploma	FS W	Sept	25,459	24,513	–	–	49,972
Early Childhood Care and Education Pathway		Sept	23,648	–	–	–	23,648
Allied Health							
Bachelor of Music Therapy Degree (program starts in year 3)	FS W ❶	Sept	29,513	27,333	11,977	–	68,823
Rehabilitation Assistant Diploma	FS W ❶	Sept	24,735	24,735	–	–	49,470
Motion Picture Arts: Filmmaking Animation Visual Effects Costuming							
Bachelor of Motion Picture Arts Degree	⌘ FS W D ❶	Sept	36,708	37,347	36,215	34,108	144,378
Costuming for Stage and Screen Diploma	FS ❶	Sept	35,034	27,958	–	–	62,992
Visual Effects for Film, Streaming and Immersive Media Diploma	FS ❶	Sept	39,767	39,767	–	–	79,534
2D Animation & Visual Development Diploma	FS ❶	Sept	34,625	35,710	–	–	70,335
3D Animation for Film & Games Diploma	FS ❶	Sept	41,565	35,679	–	–	77,244
Documentary Certificate	❶	Sept	33,190	–	–	–	33,190
Performing Arts: Music Theatre Acting Arts & Entertainment							
Bachelor of Music in Jazz Studies Degree–Education	FS D ❶	Sept	31,631	35,501	31,833	31,650	130,615
Bachelor of Music in Jazz Studies Degree–Performance/Composition	FS D ❶	Sept	31,631	35,501	30,854	30,922	128,908
Acting for Stage and Screen Diploma	FS ❶	Sept	27,491	32,253	34,020	–	93,764
Arts and Entertainment Management Diploma	FS W ❶	Sept	24,816	21,016	–	–	45,832
Advanced Arts & Entertainment Management Certificate	W ❶	May	17,119	–	–	–	17,119
Music Diploma	FS ❶	Sept	26,592	26,592	–	–	53,184
Musical Theatre Diploma	FS ❶	Sept	30,632	30,124	30,124	–	90,880
Technical Theatre Diploma	FS ❶	Sept	26,971	29,737	–	–	56,708
IDEA School of Design							
Bachelor of Design in Visual Communication Degree (Concentrations: Branding, Illustration, Interactive Design)	⌘ FS W D ❶	Sept	32,434	32,434	32,434	32,434	129,736
Interaction Design Diploma	FS W ❶	Sept	29,936	29,936	–	–	59,872
Tourism Management							
Bachelor of Tourism Management Degree (Concentrations: Adventure, Hotel and Resort)	⌘ FS W	Sept, Jan	24,318	24,111	25,398	26,416	100,243
Tourism Management Co-operative Education Diploma	FS W	Sept, Jan	24,552	23,934	–	–	48,486
Global Leadership in Sustainable Tourism Post-Baccalaureate Diploma	FS W	May, Sept	29,025	11,219	–	–	40,244
Outdoor Recreation Management							
Outdoor Recreation Management Diploma	FS W	Aug	31,388	26,345	–	–	57,733
Kinesiology							
Bachelor of Kinesiology Degree (Concentrations: Exercise Science, Health Promotion)	FS W D	Sept	24,058	23,898	26,206	26,137	100,299
Diploma in Kinesiology		Sept	24,330	24,399	–	–	48,729

Legend:

- ⌘ Full-term study abroad exchange or field school option capilanou.ca/studyabroad
- FS Short-term field school option capilanou.ca/studyabroad
- W Work-Integrated Learning (WIL)/Co-op options
- D Exit credential available
- ❶ Program requires a portfolio, audition or interview as part of the application

2026/27 tuition fees are projected estimates based on 2025/26 fees and are subject to change. Amounts include tuition and student fees combined, but do not include books or supplies. Tuition fees vary by program and can be paid per semester.



Scan to see which programs are eligible for a Post-Graduation Work Permit.



Good value for a great future

Affordable tuition

With some of the most competitive tuition rates in British Columbia and a reputation for outstanding graduates who get hired, CapU is a wise investment for your university education.



Tuition estimates include:

- U-Pass BC (public transportation)
- Student services and technology fee
- Student success fee
- CSU Extended Health and Dental Plan
- Student Union fees
- Term enrolment fees

Look up program fees



Use the fee estimator tool to calculate the cost of a program at capilanou.ca/tuition-fees-estimator

90%

CapU bachelor's degree alumni who are satisfied with their education

93%

CapU bachelor's degree alumni who rated the quality of instruction as very good or good

Source: BC Student Outcomes Survey (2022-2024)

Competitively-priced student housing

CapU provides 628 beds in our safe and convenient on-campus housing at both our North Vancouver and Squamish campuses. In 2026, a new 360-bed student residence will open in North Vancouver. Thoughtfully designed to offer modern, secure and affordable accommodations on campus, the new residence will help students feel at home while focusing on their studies.

CapU student housing fees per term

North Vancouver Campus	Spring 2026
Accommodation for Double Room (shared)	\$3,100
Meal plan (mandatory)	\$2,600
Double Room Total	\$5,700
Accommodation for Single Room	\$3,740
Meal plan (mandatory)	\$2,600
Single Room Total	\$6,340

Rates are for the Spring 2026 term at our new on-campus student housing facility in North Vancouver. Summer and Fall 2026 fees are to be determined.

Starting at just \$1,425 per month, your residence fees include:

- All your meals as part of a declining balance Meal Plan
- A fully furnished room with a bed, storage, desk, chair and closet
- Unlimited high-speed wireless Internet
- Access to laundry, washrooms and showers
- Dedicated lounge and study spaces



North Vancouver housing

You may also choose to live off campus in a homestay or in shared or independent rental housing. For more available accommodation options and an overview of B.C. tenancy rights, please visit capilanou.ca/intl-accommodation

Explore student housing options



Learn more about student housing for North Van and Squamish at capilanou.ca/student-housing

Learn about the cost of living



For a breakdown of basic cost-of-living expenses in B.C., visit capilanou.ca/living-working-canada



Squamish housing

A space to thrive

CapU is known for its close-knit community where students truly feel they belong in their home away from home. From the moment you accept your offer to the day you launch your career, we offer a wide range of personalized services to ensure you feel supported, welcomed and empowered every step of the way.

Career services

- Personal career planning
- On-campus work opportunities
- Career workshops on cover letter and resumé writing, interviews, etc.
- Networking events, hiring fairs and company tours
- Job search support, job boards and more!

95%

of CapU bachelor's degree graduates are in the labour force.

84%

of CapU bachelor's degree graduates are working in a job related to their program.

91%

of CapU bachelor's degree graduates said the knowledge and skills gained at CapU were useful in performing their job.

Source: BC Student Outcomes Survey (2022- 2024)

For more information about working in BC, visit capilano.ca/living-working-canada

"My experience at CapU has been incredibly welcoming, thanks to its diverse community of students and professors. The university's many workshops and events have given me the support and confidence to pursue exciting career opportunities. I also feel comfortable and secure on campus, knowing where to turn if I ever need assistance."

Angelica R.

Bachelor of Arts with a Major in Psychology, Philippines



International student services

The Wong & Trainor Centre for International Experience is your go-to place for all things related to international students including:

- Admissions advising
- Immigration advising
- Peer mentorship
- Health insurance
- Exchange and field school opportunities
- Transition support

Admission requirements

Undergraduate admission requirements vary by program, but, at a minimum, for most CapU programs, the school requires successful completion of:

- B.C. secondary school (Grade 12). See secondary school equivalencies at capilano.ca/secondary-school-equivalencies

Admission requirements vary by program. See capilano.ca/programs

English language requirements

If you do not meet the English language requirements for your program of choice, start your studies in an English for Academic Purposes (EAP) program or choose a pathway program from an English language partner school. For a list of partner schools, visit capilano.ca/pathway-partners



International Baccalaureate English Language A Higher Level with a minimum mark of 5 meets the minimum English language requirement.

† Duolingo English Test is being accepted by most programs on a temporary basis. See English Language Requirements at capilano.ca/english-requirements for more details.

†† Duolingo English Test accepted upon EAP departmental review.

††† Students taking EAP 100, 101 and 090 have the option to take academic courses in same term as the EAP course.

English language proficiency requirements for CapU programs	Academic IELTS		TOEFL		Other tests		English for academic purposes (EAP) level
	Overall Score	No Score Below	iBT	PBT	Duolingo †	PTE	
Academic and Pathway Programs							
Most Capilano University programs capilano.ca/programs	6.5	6.0	83	560	125 (no sub-score below 115)	56	EAP 100 & EAP 101 (minimum B+ grade)
Global Leadership in Sustainable Tourism Post-Baccalaureate Diploma	6.0	5.5 (6.0 in writing)	75	540	115 (no sub-score below 105)	53	EAP 090 (minimum B+ grade)
Early Childhood Care and Education Pathway 2 terms	5.5	5.0	67	520	100 (no sub-score below 90)	50	EAP 080 (minimum B grade)
Business Administration Pathway 2 terms	5.5	5.0	67	520	100 (no sub-score below 90)	50	EAP 080 (minimum B grade)
English for Academic Purposes (EAP) Course Levels							
EAP 100 & EAP 101 Arts & Sciences or Business combined ††† 1 term	6.0	5.5	71	530	††	53	EAP 090 (minimum B grade)
EAP 090 Arts & Sciences or Business combined ††† 1 term	5.5	5.0	67	520	††	50	EAP 080 (minimum B grade)
EAP 080 (Advanced) 1 term	5.0	4.5	45	480	††	47	EAP 070 (minimum B grade)
EAP 070 (Advanced) 1 term	4.5	4.0	32	440	††	44	EAP 060 (minimum B grade)
EAP 060 (Intermediate) 1 term	Not applicable						EAP 050 (minimum B grade)
EAP 050 (Intermediate) 1 term	Not applicable						Placement based on CapU's EAP Placement Test

Become a CapU Student

Apply to CapU today

Apply online at capilano.ca/apply. The application fee is CAD \$135 for international students, and it allows you to apply for up to two programs. With your application, upload your supporting documents such as transcripts, English translations and proof of English proficiency results.

General application deadlines

Term	Application opening date	Recommended deadline
Fall (September)	First week of October	May 31
Spring (January)	First week of February	Sept. 30
Summer (May)	First week of June	Jan. 31

Application deadlines vary by program.
See capilano.ca/programs

Capilano University

2055 Purcell Way
North Vancouver, B.C.
Canada V7J 3H5



Published August 2025

CapilanoU.ca

Connect with us



Connect with
an international
admissions advisor.



Go on an in-person or
virtual campus tour
Check out our beautiful
campus in the trees.

Get to know us

- @CapilanoU
@CapilanoUCIE
@CapUStudent life
- @CapilanoUCIE
@CapUStudent life
- @CapUStudent life
- @CapilanoUniversity

Contact us

Wong and Trainor Centre for
International Experience (CIE)
Tel: +1 604 990 7914
inted@capilano.ca

Regional Offices

Latin America
latam@capilano.ca

South East Asia
asia@capilano.ca

South Korea and Japan
northasia@capilano.ca

Greater China
china@capilano.ca

Africa
africa@capilano.ca